

MOONWLKR

1710 Whitney Mesa Dr.
Henderson, NV 89014

Sample: 2105CNS0498.3741

Strain: 1500mg Full Spectrum Peppermint

Lot #: 210517MW15;

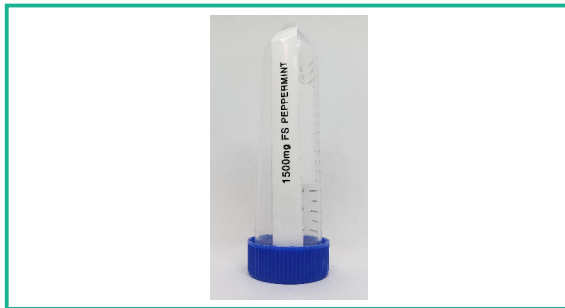
Sample Received: 05/19/2021; Report Created: 05/24/2021

Harvest Process Lot:

METRC Batch: ; METRC Sample:

1500mg Full Spectrum Peppermint

Ingestible, Tincture



Safety

Pass Pesticides	Pass Microbials	Pass Mycotoxins
Pass Metals	Pass Foreign Matter	

ND Total THC	1,482.7920 mg/unit Total CBD	Pass 0.294 aw Water Activity	NR PH
-----------------	------------------------------------	------------------------------------	----------

Terpenes

Pine	Cinnamon	Orange
------	----------	--------

Cannabinoids

Analyte	LOD	LOQ	Complete	
	%	%	Mass mg/unit	Mass mg/g
CBDV	0.01500	0.01600	14.6010	0.4710
THCV	0.01200	0.01600	<LOQ	<LOQ
CBD	0.01300	0.01600	1482.7920	47.8320
CBG	0.01000	0.01600	22.1030	0.7130
CBDa	0.01200	0.01600	<LOQ	<LOQ
CBGa	0.00800	0.01600	<LOQ	<LOQ
CBN	0.00500	0.01600	10.9430	0.3530
Δ9-THC	0.01100	0.01600	<LOQ	<LOQ
Δ8-THC	0.01300	0.01600	<LOQ	<LOQ
CBC	0.00500	0.01600	10.9430	0.3530
THCa	0.00600	0.01600	<LOQ	<LOQ
CBCa	0.01300	0.01600	<LOQ	<LOQ
Total			1541.3820	49.7220

Analyte	LOQ	Mass	Mass
	mg/g	mg/g	%
α-Pinene	0.100	0.451	0.0451
β-Caryophyllene	0.100	0.418	0.0418
δ-Limonene	0.100	0.287	0.0287
Eucalyptol	0.100	0.266	0.0266
Linalool	0.100	0.208	0.0208
β-Myrcene	0.100	0.188	0.0188
Terpinolene	0.100	0.148	0.0148
3-Carene	0.100	<0.100	<0.0100
α-Bisabolol	0.100	<0.100	<0.0100
α-Humulene	0.100	<0.100	<0.0100
α-Terpinene	0.100	<0.100	<0.0100
β-Pinene	0.100	<0.100	<0.0100
Camphene	0.100	<0.100	<0.0100
Caryophyllene Oxide	0.100	<0.100	<0.0100
cis-Nerolidol	0.100	<0.100	<0.0100
γ-Terpinene	0.100	<0.100	<0.0100
Guaiol	0.100	<0.100	<0.0100
Ocimene	0.100	<0.100	<0.0100
p-Cymene	0.100	<0.100	<0.0100
trans-Nerolidol	0.100	<0.100	<0.0100
trans-Ocimene	0.100	<0.100	<0.0100
Total		1.967	0.1967

1 Unit = ,31g
Total THC = THCa * 0.877 + Δ9-THC + Δ8-THC. Total CBD = CBDa * 0.877 + CBD. LOQ = Limit of Quantitation; ND = Not Detectable, NR = Not Reported, NT = Not Tested. Cannabinoids analyzed per Canalysis SOP-06/SOP-14 on an Agilent 1220 HPLC-DAD. Unless otherwise stated all quality control samples performed within specifications established by the Laboratory.
Notes:

LOQ = Limit of Quantitation; The reported result is based on a sample weight with the applicable moisture content for that sample; ND = Not Detectable, NR = Not Reported, NT = Not Tested. Terpenes analyzed per Canalysis SOP-09 on an Agilent 7890B HS-GC-FID. Unless otherwise stated all quality control samples performed within specifications established by the Laboratory.
Notes:

2952 Meade Ave
Las Vegas, NV
(702) 304-7878
<http://www.canalysislab.com>



Accreditation #101469

Trevor Low
Trevor Low
Lab Director

Confident Cannabis
All Rights Reserved
support@confidentcannabis.com
(866) 506-5866



MOONWLKR

1710 Whitney Mesa Dr.
Henderson, NV 89014

Sample: 2105CNS0498.3741

Strain: 1500mg Full Spectrum Peppermint
Lot #: 210517MW15;
Sample Received: 05/19/2021; Report Created: 05/24/2021
Harvest Process Lot:
METRC Batch: ; METRC Sample:

1500mg Full Spectrum Peppermint

Ingestible, Tincture



Pesticides

Pass

Analyte	LOQ	Limit	Mass	Status
	PPM	PPM	PPM	
Abamectin	0.010	0.200	ND	Pass
Acequinocyl	0.010	4.000	ND	Pass
Bifenazate	0.010	0.400	ND	Pass
Bifenthrin	0.010	0.100	ND	Pass
Cyfluthrin	0.050	2.000	ND	Pass
Cypermethrin	0.010	1.000	ND	Pass
Daminozide	0.020	0.800	ND	Pass
Dimethomorph	0.010	2.000	ND	Pass
Etoxazole	0.010	0.400	ND	Pass
Fenhexamid	0.010	1.000	ND	Pass
Flonicamid	0.010	1.000	ND	Pass
Fludioxonil	0.010	0.500	ND	Pass
Imidacloprid	0.010	0.500	ND	Pass
Myclobutanil	0.010	0.400	ND	Pass
Pacllobutrazol	0.010	0.400	ND	Pass
Piperonyl Butoxide	0.010	3.000	ND	Pass
Pyrethrins	0.010	2.000	ND	Pass
Quintozene	0.050	0.800	ND	Pass
Spinetoram	0.010	1.000	ND	Pass
Spinosad	0.010	1.000	ND	Pass
Spirotetramat	0.010	1.000	ND	Pass
Thiamethoxam	0.010	0.400	ND	Pass
Trifloxystrobin	0.010	1.000	ND	Pass

LOQ = Limit of Quantitation; The reported result is based on a sample weight with the applicable moisture content for that sample; ND = Not Detectable, NR = Not Reported, NT = Not Tested. Pesticides analyzed per Canalysis SOP-10/SOP-15 using Agilent 1260 LC-MS and/or 7000 GC-MS. Unless otherwise stated all quality control samples performed within specifications established by the Laboratory.
Notes:

Microbials

Pass

Analyte	Limit	Mass	Status
	CFU/g	CFU/g	
Shiga toxin-producing E. coli	ND in 1g	ND	Pass
Salmonella	ND in 1g	ND	Pass
Aerobic Bacteria	100000	ND	Pass
Bile-Tolerant Gram-Negative Bacteria	1000	ND	Pass

Counts over 20,000 are estimates for Bile-Tolerant Gram-Negative Bacteria and Total coliforms. Counts over 40,000 are estimates for Yeast & Mold. ND = Not Detectable, NR = Not Reported, NT = Not Tested. Yeast & Mold, Bile-tolerant bacteria, and Total coliform analyzed by SOP-M003 (chromogenic plates). Aspergillus, Salmonella, and E. coli analyzed by SOP-M004 and SOP-M005 (qPCR). Unless otherwise stated all quality control samples performed within specifications established by the Laboratory.
Notes:

Heavy Metals

Pass

Analyte	LOQ	Limit	Mass	Status
	PPB	PPB	PPB	
Arsenic	250.000	2000.000	<LOQ	Pass
Cadmium	250.000	820.000	<LOQ	Pass
Lead	250.000	1200.000	<LOQ	Pass
Mercury	25.000	400.000	<LOQ	Pass

LOQ = Limit of Quantitation; The reported result is based on a sample weight with the applicable moisture content for that sample; ND = Not Detectable, NR = Not Reported, NT = Not Tested. Heavy Metals analyzed per Canalysis SOP-08 on an Agilent 7800 ICP-MS.
Notes:

Mycotoxins

Pass

Analyte	LOQ	Limit	Mass	Status
	PPB	PPB	PPB	
Aflatoxins	10.00	20.00	ND	Pass
Ochratoxin A	10.00	20.00	ND	Pass

LOQ = Limit of Quantitation; The reported result is based on a sample weight with the applicable moisture content for that sample; ND = Not Detectable, NR = Not Reported, NT = Not Tested. Mycotoxins analyzed per Canalysis SOP-10/SOP-15 using Agilent 1260 LC-MS and/or 7000 GC-MS. Unless otherwise stated all quality control samples performed within specifications established by the Laboratory.
Notes:

2952 Meade Ave
Las Vegas, NV
(702) 304-7878
<http://www.canalysislab.com>



Accreditation #101469

Trevor Low
Trevor Low
Lab Director

Confident Cannabis
All Rights Reserved
support@confidentcannabis.com
(866) 506-5866

