



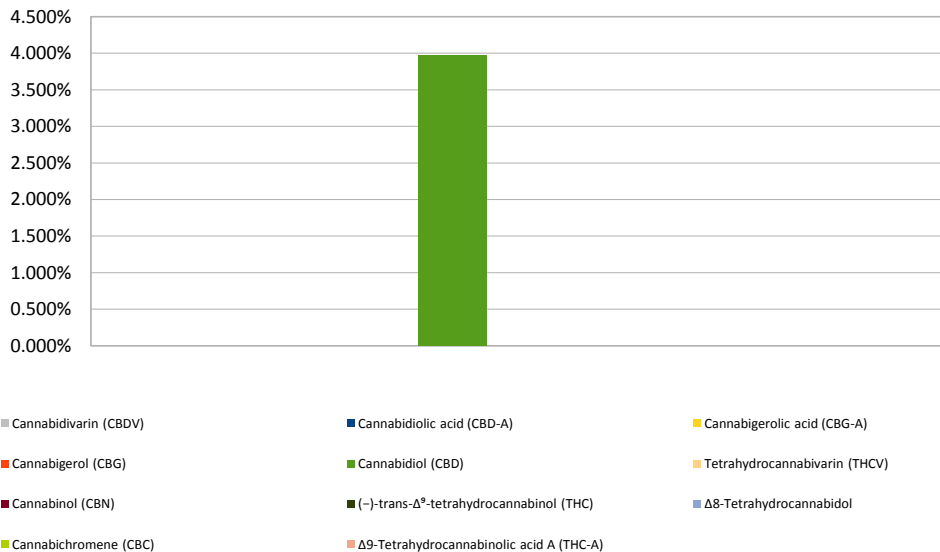
Cannabinoid Profile

Customer: Americas Finest CBD
Customer Sample ID: 1000mg IT B175U,P,C
Laboratory Number: 201907-0771
Extraction Technician: DF
Analytical Chemist: CB
Servings per Bottle: 30.0
Density: 0.943

Extraction Date(s)	Analysis Date(s)
7/24/2019	7/24/2019

Cannabinoid (HPLC)	Results			
	LOD mg/g	Percent	mg/mL	mg/Bottle
Cannabidiol (CBD)	<0.1	3.976%	39.76	1192.8
Cannabidiol (CBD)	<0.1			
Tetrahydrocannabivarin (THCV)	<0.1			
Cannabinol (CBN)	<0.1			
(-)-trans-Δ ⁹ -tetrahydrocannabinol (THC)	<0.1			
Δ8-Tetrahydrocannabinol	<0.1			
Cannabichromene (CBC)	<0.1			
Δ9-Tetrahydrocannabinolic acid A (THC-A)	<0.1			
Cannabinoids Total		Percent	mg/mL	
Max Active THC		0.00%	0.00	
Max Active CBD		3.98%	39.76	
T. Active Cannabinoids		3.98%	39.76	
Total Cannabinoids		3.98%	39.76	
Ratios				
NA :1 CBD to THC		0.00 :1 THC to CBD		

Cannabinoid (%)



Altitude Consulting, LLC utilizes NIST traceable Reference Standards and Certified Reference Material to calibrate analytical instruments along with proven analytical methods. The methods are applied in the most ethical manner following good laboratory practice guidelines. The results of this report are based solely on the sample submitted and cannot be reproduced.